



GOOD MORNING  
Have Good Trading Day

MONDAY



Price is what you pay.  
Value is what you get.

- Warren Buffet





## MARKET PLUSE

### INDIAN INDICES

NAME	CMP	NET CH.	%
SENSEX	27011	-214	-0.79
NIFTY	8181	-58	-0.71

### INDIAN ADR'S

SYMBOL	CLOSE	GAIN/ LOSS %
DRREDDY	52.79	+1.56
HDFCBANK	56.66	-0.32
ICICIBK	10.82	-1.01
INFY	31.19	+0.68
TATAMOTOR	41.31	+0.29
WIPRO	11.59	+1.05

### FII AND MF ACTIVITY

SYMBOL	In Crs.
FIIs Eq (Provisional)	-3157.61
FIIs Index Future	-504.06
FIIs Index Options	1050.11
FIIs Stock Future	-26.18
FIIs Stock Options	-0.77
DII's Eq (Provisional)	2460.8

### CURRENCY

RBI RATE	30-APR-2015
RUPEE - \$	63.5780
EURO	70.5334
YEN 10	53.5300
GBP	97.9864

## MARKET PLUSE

### GLOBAL INDICES

NAME	CMP	NET CH.	%
DOW	18024	+183	+1.03
NASDAQ	5005	+63	+1.29
NIKKEI	19531	Unch	Unch
HANG SENG	28188	+55	+0.20
SGX NIFTY	8268	+58	+0.70

### WORLD COMMODITIES

FUTURE	U\$\$	CHANGES%
GOLD	1182.1	+7.6
SILVER	16.250	+0.120
CRUDE	58.87	-0.28
COPPER	2.9005	-0.0290
NATURAL GAS	2.770	-0.006

### WORLD EVENTS

- US: Factory Orders m/m
- UK: Halifax HPI m/m

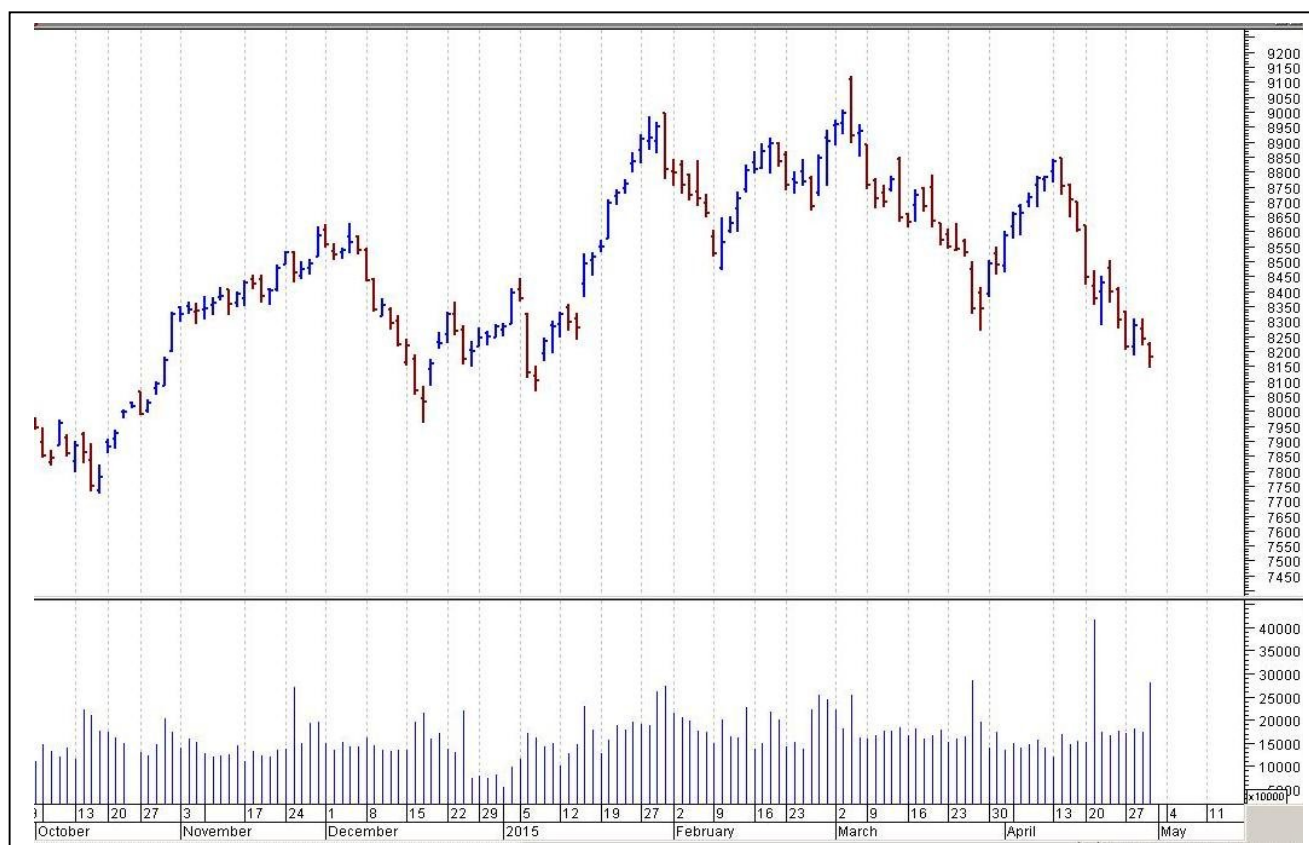
## TOP STORY

- Religare Enterprises: Bain Cap, Baring and Multiples in race to acquire stake in co. Co denies sell-off plans. CEO says that co may raise funds.
- V-Mart to invest Rs 200 cr to add 200 stores in 5 years - ET.
- GAIL along with US contractor blamed for Telengaga pipeline accident.
- CBI probes MCX's market debut. FMC's exception to bourse for 2012 IPO under scanner
- Investor groups begin to question Diageo's silence on allegations against Vijay Mallya Co may be asked to restate its financial accounts.
- Adani Group, GSPC (BS) to mull over equity options to finance Mundra LNG Terminal. Options may include IPO.
- IDFC Q4 -Cons Net Profit At `382 Cr Vs `258 Cr (YoY). Cons Income From Ops At `2,569 Cr Vs `2,202 Cr (YoY)





## NIFTY CHART



## MARKET COMMENTARY

Indian equity markets continued their weak trade and closed with significant losses in Thursday's trade. Traders were seen piling positions in Consumer Durables and Oil & Gas stocks while selling was witnessed in Metal, FMCG and IT sector stocks. For today's trade Nifty likely to trade in the range between 8230 - 8245 in the upper side and 8170 – 8160 in the lower side.

### MARKET LEVELS

	CMP	SUPPORT LEVELS				RESISTANCE LEVELS			
NIFTY	8181	8170	8160	8130	8050	8230	8245	8275	8305





### FUTURES CORNER

SCRIPS	CLOSE	SUPPORT	TARGET		REMARKS
		STOP LOSS	T1	T2	
IRB	234.7	231	241	245	TRADING CALL
HDIL	119.1	117	124	127	TRADING CALL
UPL	472.7	465	488	498	TRADING CALL

### EQUITY CORNER

SCRIPS	CLOSE	SUPPORT	TARGET		REMARKS
		STOP LOSS	T1	T2	
MANGALAM	38.75	37	41.5	43	TRADING CALL
DBREALTY	63.75	61	68	71	TRADING CALL

### DELIVERY BASED CALL / INVESTMENT CALL

SCRIPS	CMP	SUPPORT	TARGET		REMARK
		STOP LOSS	T1	T2	

### BULK DEALS (BSE)

SCRIP	CLIENT NAME	BUY/SELL	QUANTITY	PRICE
STAR	ROUTE ONE FUND I LP	B	315,000	1,013.77
VISASTEEL	VISA INFRASTRUCTURE LIMITED	S	2,650,000	17.23
VISASTEEL	LTS INVESTMENT FUND LTD	B	2,650,000	17.23

### BULK DEALS (NSE)

SCRIP	CLIENT NAME	BUY/SELL	QUANTITY	PRICE
JUSTDIAL	GOLDMAN SACHS INVESTMENTS MAURITIUS I LTD	SELL	643171	1068.14
VRLOG	GOLDMAN SACHS INDIA FUND LTD	BUY	1719840	295.22
WELPROJ	MERRILL LYNCH CAPITAL MARKETS ESPANA S.A. SVB	BUY	1500000	40

### SCRIP'S IN F&O BAN

(To resume for normal trading below 80% of market wide limit required)

NIL





NIFTY 50 STOCKS: SUPPORT & RESISTANCE						
Symbol	Close	Support 1	Support 2	Pivot Point	Resistance1	Resistance2
ACC	1433.70	1412.47	1391.23	1449.33	1470.57	1507.43
AMBUJACEM	232.40	229.00	225.60	234.90	238.30	244.20
ASIANPAINT	762.45	749.48	736.52	760.17	773.13	783.82
AXISBANK	567.80	557.07	546.33	569.73	580.47	593.13
BAJAJ-AUTO	1948.65	1914.83	1881.02	1946.32	1980.13	2011.62
BANKBARODA	169.00	167.12	165.23	169.28	171.17	173.33
BHARTIARTL	381.10	372.60	364.10	380.30	388.80	396.50
BHEL	238.05	228.03	218.02	235.62	245.63	253.22
BPCL	764.75	749.82	734.88	766.48	781.42	798.08
CAIRN	213.45	209.00	204.55	212.00	216.45	219.45
CIPLA	636.00	623.20	610.40	632.80	645.60	655.20
COALINDIA	362.75	357.83	352.92	364.12	369.03	375.32
DRREDDY	3310.25	3264.50	3218.75	3322.25	3368.00	3425.75
GAIL	360.30	357.08	353.87	361.32	364.53	368.77
GRASIM	3589.30	3564.33	3539.37	3592.17	3617.13	3644.97
HCLTECH	880.55	866.03	851.52	877.02	891.53	902.52
HDFC	1170.00	1153.40	1136.80	1176.70	1193.30	1216.60
HDFCBANK	988.80	980.23	971.67	987.62	996.18	1003.57
HEROMOTOCO	2328.90	2314.93	2300.97	2338.97	2352.93	2376.97
HINDALCO	128.60	126.80	125.00	128.85	130.65	132.70
HINDUNILVR	850.35	835.22	820.08	847.33	862.47	874.58
ICICIBANK	331.15	326.37	321.58	329.98	334.77	338.38
IDEA	175.00	172.38	169.77	176.37	178.98	182.97
IDFC	167.90	163.55	159.20	166.35	170.70	173.50
INDUSINDBK	823.80	817.43	811.07	826.42	832.78	841.77
INFY	1942.25	1928.03	1913.82	1946.52	1960.73	1979.22
ITC	322.35	319.57	316.78	323.98	326.77	331.18
KOTAKBANK	1332.90	1306.93	1280.97	1323.27	1349.23	1365.57
LT	1631.30	1619.03	1606.77	1637.87	1650.13	1668.97
LUPIN	1772.55	1740.03	1707.52	1762.52	1795.03	1817.52
M&M	1145.00	1130.48	1115.97	1152.22	1166.73	1188.47
MARUTI	3725.85	3692.87	3659.88	3742.93	3775.92	3825.98
NMDC	128.25	125.50	122.75	127.85	130.60	132.95
NTPC	150.30	149.17	148.03	150.53	151.67	153.03
ONGC	304.00	301.80	299.60	305.30	307.50	311.00
PNB	159.75	158.12	156.48	159.73	161.37	162.98
POWERGRID	142.20	140.13	138.07	142.47	144.53	146.87
RELIANCE	862.35	851.57	840.78	858.73	869.52	876.68
SBIN	269.75	266.48	263.22	269.97	273.23	276.72
SSLT	209.85	204.10	198.35	207.75	213.50	217.15
SUNPHARMA	938.85	925.27	911.68	934.58	948.17	957.48
TATAMOTORS	508.25	503.07	497.88	511.93	517.12	525.98
TATAPOWER	75.80	74.15	72.50	76.05	77.70	79.60
TATASTEEL	360.35	356.67	352.98	362.78	366.47	372.58
TCS	2463.70	2430.53	2397.37	2460.27	2493.43	2523.17
TECHM	621.35	604.50	587.65	615.15	632.00	642.65
ULTRACEMCO	2672.10	2641.83	2611.57	2665.27	2695.53	2718.97
WIPRO	538.60	534.22	529.83	538.13	542.52	546.43
YESBANK	839.45	828.00	816.55	838.40	849.85	860.25
ZEEL	312.05	309.03	306.02	314.02	317.03	322.02





## CORPORATE ACTION / BOARD MEETINGS

NSE Download Ref.No.:NSE/SURV/29520:- Star Ferro and Cement Limited (SFCL) shall be transferred from trade for trade segment (series: BE) to rolling segment (series: EQ) with effect from May 08, 2015 (Friday).

NSE Download Ref No : NSE/FAOP/29322:- Revision in Market Lot of Derivative Contracts on Individual Stocks WEF MAY04, 2015 . See NSE circular (Annexure) for details and list of stocks.

NSE Download Ref.No.:NSE/CML/29555:- Change in name of company Excel Infoways Ltd to Excel Realty N Infra Ltd. Symbol will change from EXCELINFO to EXCEL wef May 5, 2015

NSE Download Ref.No.:NSE/CML/29579:- Change in name of company SahPetroleums Limited to GP Petroleums Limited. Symbol will change from SAHPETRO to GULFPETRO wef May 6, 2015

NSE Download Ref.No.:NSE/CML/29586:- Change in Symbol and Name of the Company - Sesa Sterlite Limited to Vedanta Limited. Symbol will change from SSLT to VEDL wef May 7, 2015

### BOARD MEETINGS

COMPANY NAME	DATE	PURPOSE	RS. PER SH.
SUNTV	5-May-15	Dividend	
HEXAWARE	5-May-15	Annual General Meeting/ Dividend	2
TVSMOTOR	5-May-15	Dividend	1.15
GDL	5-May-15	Dividend	3
GODREJCP	5-May-15	Dividend	2.5
ITDCM	5-May-15	Annual General Meeting	
CASTROLIND	6-May-15	Dividend	4
IBVENTURES	6-May-15	Dividend	1
IBULHSGFIN	6-May-15	Dividend	9
FOSECOIND	7-May-15	Dividend	3.5
HINDUJAVEN	8-May-15	Dividend	15
RELIANCE	8-May-15	Dividend	10
GMBREW	8-May-15	Annual General Meeting/Dividend	2.5
APTECHT	11-May-15	Dividend	1.75
SUNCLAYLTD	13-May-15	Dividend	
MYSOREBANK	14-May-15	Annual General Meeting/Dividend	1
NESTLEIND	19-May-15	Annual General Meeting/Dividend	12.5
HARITASEAT	22-May-15	Dividend	
RIIL	26-May-15	Annual General Meeting/Dividend	3.5



## NEWS & RUMOURS:

- Gold (Spot Dollar) major support = \$1150/\$1123 & Resistance = \$1204/\$1239.
- Crude oil range->\$54 to \$64.
- U.S. Stocks Advance as Biotech Shares Rebound on Gilead Results: - U.S. stocks rose, with the Standard & Poor's 500 Index paring a weekly loss, as Gilead Sciences Inc. led a rebound after Thursday's selloff in biotechnology and small-cap shares.
- China's struggles argue for stimulus all round: - China's factories stayed stuck in the slow lane in April while Japanese output went into reverse and South Korea suffered its worst export performance in two years, adding urgency to calls for more state stimulus in all three economies.
- Gold continues slump in thinly traded session on May Day holiday: - [Gold futures](#) continued to plummet on Friday, extending a significant sell-off one day earlier on a thinly traded session limited by market closures on a three-day weekend. Gold ended the week on a three-day slump, falling nearly 3.75% from Tuesday's high of 1,214.90. For the week, though, the precious metal was only down modestly by 0.06% during a volatile stretch of trading. Gold opened the week by shooting up 2.40% on Monday, after two sell-offs late last week.
- NYMEX crude down slightly despite uptick in China official PMI: - Crude oil held slightly lower in early Asia on Friday as investors noted a slight uptick in China's official manufacturing gauge, but remain focused on over supply and demand prospects. Crude futures continued its upward swing on Thursday ending the month of April on a high note, as OPEC supply leaped to its highest level in more than two years and a lower than expected U.S. weekly buildup remained in focus.

## TRENDS & OUTLOOK – DATE: 04- May- 2015

### PRECIOUS METALS:

COMMDITY (MCX)	S2	S1	PIVOT POINT	R1	R2
GOLD (June)	26130	26400	26631	26970	27275
SILVER (July)	34800	36000	37200	38365	39600

### BASE METALS

COMMDITY (MCX)	S2	S1	PIVOT POINT	R1	R2
COPPER (June)	402	407	413	421	426
ZINC (May)	145.20	148.20	150.10	152.70	155.55
LEAD (May)	130.30	133.45	136.20	138.45	141.55
NICKEL (May)	834	859	884	903	925

### ENERGY

COMMDITY (MCX)	S2	S1	PIVOT POINT	R1	R2
CRUDE OIL (May)	3550	3636	3765	3838	3966
NATURAL GAS (May)	164	171	176	184	191

### DATE TALKS : TODAY'S ECONOMIC DATA :

HSBC Final Manufacturing PMI of China, Factory Orders, and FOMC Member Evans Speaks, Loan Officer Survey.





Registered Office

Indira House, 3rd Floor, 5 Topiwala Lane,  
Opp. Lemington Road Police Station, Grant Road (East), Mumbai - 400007.

Corporate Office

'Ramavat House' E-15, Saket Nagar, Indore - 452018 (M.P.)

Customer Care

Tel: +91-731-4097170/ 71/ 72/ 73/ 74 M. +91 93031 72345

Email: [customercare@indiratrade.com](mailto:customercare@indiratrade.com) [www.indiratrade.com](http://www.indiratrade.com)



INSTITUTIONAL DEALING UNIT

Africa House, 5, Topiwalla Lane, Lamington Road, Mumbai, 400007

Tel: +91 22 30080678 Fax : +91 22 23870767 Email : [ie@indiratrade.com](mailto:ie@indiratrade.com)